



# Which part of the bms manages the battery





## Overview

---

**Battery Management Unit (BMU):** The Battery Management Unit (BMU) is a key component in a Battery Management System (BMS) responsible for monitoring and measuring critical parameters of the entire battery pack or its individual cells.

**Battery Management Unit (BMU):** The Battery Management Unit (BMU) is a key component in a Battery Management System (BMS) responsible for monitoring and measuring critical parameters of the entire battery pack or its individual cells.

A battery management system (BMS) is any electronic system that manages a rechargeable battery (cell or battery pack) by facilitating the safe usage and a long life of the battery in practical scenarios while monitoring and estimating its various states (such as state of health and state of).

These are room-sized banks of batteries that store energy from renewable sources, such as solar and wind, and distribute it as needed. As with EVs, all the cells of an energy storage system must be put to optimal use and protected from adverse conditions. But while EV batteries have a capacity.

The battery management system (BMS) is a sophisticated piece of technology that performs the complicated operation of managing this battery. What is a Battery Management System (BMS)?

The battery management system is an electronic system that controls and protects a rechargeable battery to.

Battery Management System (BMS) is the “intelligent manager” of modern battery packs, widely used in fields such as electric vehicles, energy storage stations, and consumer electronics. Its core task is real-time monitoring, intelligent regulation, and safety protection to ensure that the battery.

A Battery Management System (BMS) is an electronic system designed to monitor, manage, and protect a rechargeable battery (or battery pack). It plays a crucial role in ensuring the battery operates safely, efficiently, and within its specified limits. BMSs are used in various applications.

At the core of each EV is its battery, a powerful energy source that drives the



vehicle. But, for the battery to function optimally, it needs to be carefully monitored and managed. This is where the Battery Management System (BMS) comes into play. The BMS is responsible for ensuring that the



## Which part of the bms manages the battery



### [Battery Management Systems \(BMS\): A Complete ...](#)

What is a Battery Management System (BMS)? A Battery Management System (BMS) is an electronic system that manages a ...

### [The Crucial Role of a Battery Management System \(BMS\) in ...](#)

A Battery Management System (BMS) is a pivotal component in the effective operation and longevity of rechargeable batteries, particularly within lithium-ion systems like ...

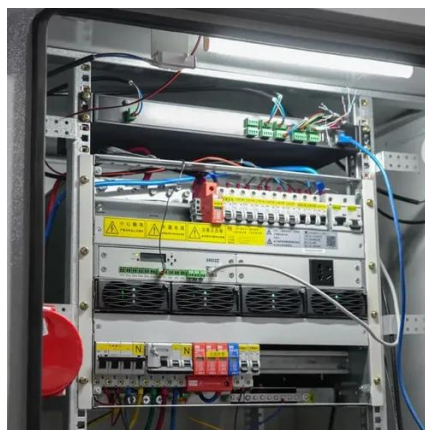


### [What's in a Battery Management System?](#)

This Tech Spotlight discusses the modern battery management system (BMS), its functionality, and the components and ...

### [Battery management system](#)

A battery management system (BMS) is any electronic system that manages a rechargeable battery (cell or battery pack) by facilitating the safe usage and a long life of the battery in ...



### [Technical Deep Dive into Battery Management System BMS](#)

Battery Management Unit (BMU): The Battery Management Unit (BMU) is a key component in a Battery Management System (BMS) responsible for monitoring and measuring ...



### [Understanding battery management systems: Key ...](#)

Despite their differences, EVs and energy storage systems both solve these challenges in the same way: the battery management ...



### [How Battery Management Systems Operate and ...](#)

Controllers and microprocessors act as the decision-making hub of a BMS. They process data collected by sensors to evaluate the ...



### [What is a Battery Management System \(BMS\)? A Complete ...](#)



It monitors crucial aspects like voltage, temperature, and cell balance, ensuring the battery operates within safe limits. The BMS also calculates the State of Charge (SOC) and ...



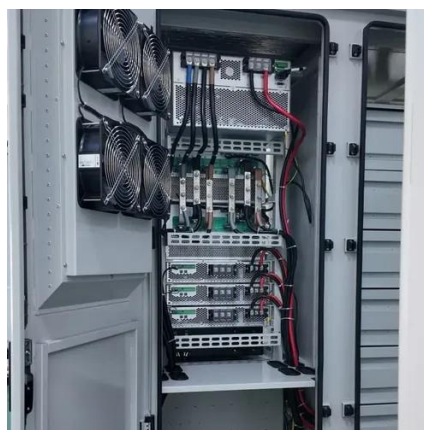
### [Guide to LiFePO4 BMS: Maximize Battery Life - ...](#)

BMS is an essential part of modern battery technology, particularly when it comes to lithium-ion battery applications. Monitoring the temperature, ...



### [Battery Management System \(BMS\) Detailed ...](#)

BMS is the "nerve center" of the battery system, and its technological level directly determines the safety, lifespan, and ...



### [Battery Management System: Introduction to ...](#)

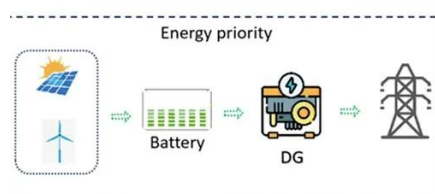
Battery Management System: Introduction to Hardware: Overview Battery Management Systems (BMS) are the key to the safe, reliable and efficient ...



### [What is a Battery Management System \(BMS\)? A ...](#)



It monitors crucial aspects like voltage, temperature, and cell balance, ensuring the battery operates within safe limits. The BMS also ...



### [What is a Battery Management System? Complete Guide to BMS ...](#)

Battery management systems perform several interconnected functions that work together to ensure safe, efficient, and long-lasting battery operation. These core capabilities ...

### [Battery Management Systems \(BMS\): A Complete Guide](#)

What is a Battery Management System (BMS)? A Battery Management System (BMS) is an electronic system that manages a rechargeable battery by monitoring its state, ...



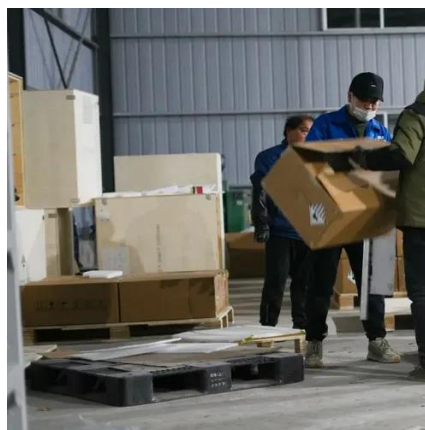
### [Battery Management System \(BMS\) Detailed Explanation: ...](#)

Battery Management System (BMS) is the "intelligent manager" of modern battery packs, widely used in fields such as electric vehicles, energy storage stations, and consumer ...

### [Understanding the Role of a Battery Management System ...](#)



The BMS is typically an embedded system and a specially designed electronic regulator that monitors and controls various battery parameters (e.g. temperature, voltage, and current) to ...



### [How Battery Management Systems Operate and Their Essential Parts](#)

Controllers and microprocessors act as the decision-making hub of a BMS. They process data collected by sensors to evaluate the battery's health and remaining charge. ...



### [What are the Main Components of Battery ...](#)

The BMS is an essential part of any electric vehicle, as it manages the high voltage battery pack and ensures its safety and ...



### [What is a Battery Management System \(BMS\)? - ...](#)

There are many BMS design features, with battery pack protection management and capacity management being two essential features. ...



### [Understanding battery management systems: Key components ...](#)



Despite their differences, EVs and energy storage systems both solve these challenges in the same way: the battery management system. The BMS is the brain of any ...



### How Does Battery Management System Work?

A battery management system (BMS) is a device that monitors and manages the charging and discharging of a lithium-ion ...



### Battery Management System (BMS) Detailed Explanation: ...

BMS is the "nerve center" of the battery system, and its technological level directly determines the safety, lifespan, and performance of the battery. With the outbreak of the new ...



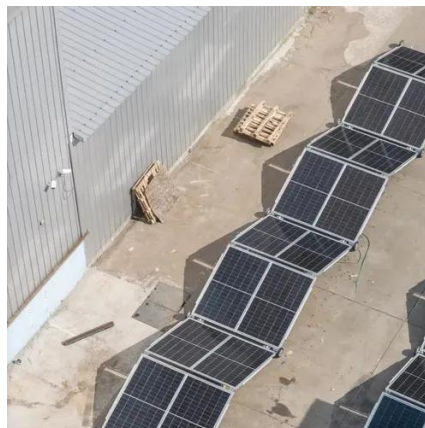
### Battery management system

The batteries can either be directly submerged in the coolant or the coolant can flow through the BMS without directly contacting the battery. Indirect cooling has the potential to create large ...

### High Voltage BMS For Energy Storage System ...



Battery Management Systems (BMS) are the key to the safe, reliable and efficient functioning of the lithium-ion batteries. Especially ...



### [What is a BMS? Exploring Battery Management Systems and ...](#)

A Battery Management System (BMS) is an essential part of any modern battery-operated device or system. Whether it's a smartphone, an electric vehicle, or a solar energy ...



### [What is a Battery Management System? Complete ...](#)

Battery management systems perform several interconnected functions that work together to ensure safe, efficient, and long-lasting ...





## Contact Us

---

For inquiries, pricing, or partnerships:

<https://www.zawojcsolina.pl>

Phone: +48 22 173 6647

Email: [info@zawojcsolina.pl](mailto:info@zawojcsolina.pl)

Scan QR code for WhatsApp.

