



Will the battery still be over-discharged with bms





Overview

One of the core functions of the Battery Management System (BMS) is to prevent the battery from overcharging and overdischarging, and to ensure that the battery operates within a safe range. The BMS monitors the voltage of each battery cell in real time through a high-precision.

One of the core functions of the Battery Management System (BMS) is to prevent the battery from overcharging and overdischarging, and to ensure that the battery operates within a safe range. The BMS monitors the voltage of each battery cell in real time through a high-precision.

The scenario where a Battery Management System (BMS) is wired in a configuration that continues to allow battery discharge even when it should be preventing it signifies a critical malfunction or misconfiguration. This situation commonly arises when the BMS is bypassed, improperly connected, or.

Overcharge and overdischarge are common problems in the use of batteries, which not only shorten the battery life, but also may cause safety risks. One of the core functions of the Battery Management System (BMS) is to prevent the battery from overcharging and overdischarging, and to ensure that.

The BMS uses high-precision voltage sensors to continuously monitor the voltage of each battery cell in real time. These sensors can accurately measure voltage changes and transmit the data to the BMS control unit. Under normal operating conditions, the voltage of the battery will fluctuate during.

Well, if a battery is discharged too quickly, it can lead to a bunch of problems. It can cause overheating, which not only reduces the battery's efficiency but also shortens its lifespan. Over - discharging can also lead to a significant drop in voltage, which might damage the battery cells and.

Over-discharge protection refers to the mechanisms and strategies employed to prevent a battery from being discharged below a certain voltage threshold, beyond which the battery may suffer from irreversible damage. This protection is crucial because deep discharging can significantly reduce the.

However, one common issue often overlooked is that the BMS itself can consume



power from the battery, and if left unchecked for long periods, this can lead to over-discharge — even when the pack is not in use. At Shenzhen Himax Electronics Co., Ltd., we often explain this phenomenon to customers.



Will the battery still be over-discharged with bms



[How does a BMS handle the discharge rate of a battery?](#)

In addition to controlling the discharge rate, the BMS also protects the battery from over-discharge. When the battery's voltage drops below a certain threshold, it's a sign that ...

[Over-Discharge Protection in BMS](#)

A: BMS prevents over-discharge by monitoring the battery's state of charge and voltage, and taking corrective action when necessary, such as sending alerts to the charger ...



[BMS for Lithium-Ion Batteries: The Essential Guide to Battery](#)

During operation, the BMS monitors current flow and can limit or disconnect the battery if current exceeds safe parameters. This protection extends battery life while ...

[User with over discharged AC2A may need a hand](#)

There is a user on Reddit with a Bluetti AC2A powerstation that has an empty battery and fails to accept a charge. User seems to have trouble to get a repair under warranty ...



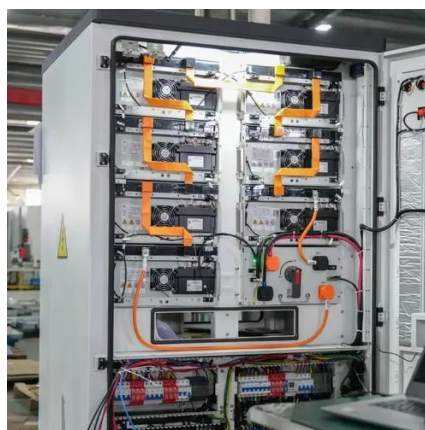
[Battery over-discharge: The hidden reason your battery dies early](#)

This article takes an in-depth look at the definition, dangers, preventive measures, and solutions related to battery over-discharge, helping you fully understand and effectively ...



[What is BMS? Maximizes the Life of Lithium Batteries](#)

During discharging, the BMS makes sure the battery doesn't get too low, as a deep discharge can ruin the cells. By managing both the charge and discharge process, BMS helps ...



[Exactly HOW does the BMS Stop the Charging Process?](#)

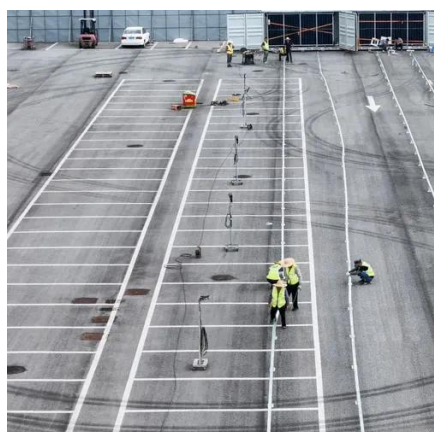
Typically this data is communicated over CANBus or Modbus over an RS485 connection. In that case, the BMS (or control system attached to the BMS) will tell the inverter ...



[Can I revive a "Deeply Discharged" 200Ah 12V Smart Lithium Battery?](#)



1) disconnect the BMS and loads completely from the battery for long term non-usage 2) use the remote switch to disable BMS (= using BMS's LB path to cut out loads) and rely on your solar ...



[BMS power drain? Prevent battery over-discharge.](#)

However, one common issue often overlooked is that the BMS itself can consume power from the battery, and if left unchecked for long ...

[Can You Overcharge LiFePO4 Battery](#)

The battery is 100% discharged, but an external load still tries to draw power from it. When you over-discharge lithium batteries, it ...



[BMS for Lithium-Ion Batteries: The Essential Guide ...](#)

During operation, the BMS monitors current flow and can limit or disconnect the battery if current exceeds safe parameters. This ...

[How BMS Works on Batteries in EV: Boosting ...](#)



The Battery Management System (BMS) in electric vehicles monitors and controls key aspects of the battery's performance. It tracks ...



[Understanding Lithium Battery Over-Discharge ...](#)

A Battery Management System (BMS) is one of the most common methods of implementing over-discharge protection. The BMS ...

[How does the BMS ensure the safety of the battery ...](#)

Over-Discharge Protection: It also prevents over-discharging by interrupting the discharge process when the cell voltage drops below a ...



[Understanding Battery Management Systems ...](#)

Most internal BMSs will reject charging below this point, even if the battery can still discharge. Discharging follows similar logic. The BMS checks: If ...



[What is a Battery Management System \(BMS\)?](#)



A Battery Management System (BMS) safeguards lithium-ion batteries by monitoring voltage, current, and temperature, preventing ...



[What is BMS on a Lithium Battery and Why Is It So ...](#)

That's why every modern lithium battery needs a Battery Management System (BMS), the "brain" that keeps the battery safe, ...

[How BMS prevents battery over charging and over discharging](#)

One of the core functions of the Battery Management System (BMS) is to prevent the battery from overcharging and overdischarging, and to ensure that the battery operates ...



[How Battery Management Systems \(BMS\) Prevent Battery ...](#)

Overcharging a battery can cause excessive heat buildup, leading to cell degradation and potential safety hazards. Conversely, deep discharging can damage battery ...



[Understanding Battery Management Systems \(BMS\) in Lithium ...](#)



Most internal BMSs will reject charging below this point, even if the battery can still discharge. Discharging follows similar logic. The BMS checks: If all three are within limits, discharging is ...



[6+ Fixes: How to Wire a BMS Still Discharging \(Guide\)](#)

The following sections will detail common causes of persistent discharge, methods for diagnosing the root cause, and strategies for implementing a corrected wiring scheme that ...



[Common faults of Lifepo4 BMS and how to deal with them?](#)

Through OTA upgrades, BMS can continuously improve its stability and reliability and adapt to the ever-changing usage environment and needs. Understanding the failure ...



[BMS power drain? Prevent battery over-discharge.](#)

However, one common issue often overlooked is that the BMS itself can consume power from the battery, and if left unchecked for long periods, this can lead to over-discharge ...

[What Is Deep Discharge? Protect Your Battery Life](#)



Even if the BMS (battery management system) shuts the battery down to prevent immediate damage, prolonged over-discharge ...



How does the BMS prevent battery overcharging and ...

To prevent overcharging and over-discharging, the BMS sets upper and lower voltage limits based on the characteristics of the battery.



How to solve the problem of BMS battery mis-triggered ...

Charged cells never reach full capacity, while discharge errors waste usable energy. Over time, this instability: Proper calibration maintains safety margins without sacrificing usable power. ...



How does the BMS prevent battery overcharging ...

To prevent overcharging and over-discharging, the BMS sets upper and lower voltage limits based on the characteristics of the battery.



I accidentally deep discharged my LiFePo4 prismatic cells



NOTE: The cell's self-discharge rate will always cause the battery to drain over time, which may be several percent per month. This is simple chemistry and physics; there's ...





Contact Us

For inquiries, pricing, or partnerships:

<https://www.zawojcsolina.pl>

Phone: +48 22 173 6647

Email: info@zawojcsolina.pl

Scan QR code for WhatsApp.

